

A forward-looking undertaking: From the fall of 1992 to the end of 1994, the most modern terminal existing on a regional airport will be built. It will be able to provide any services requested by our passengers and will also offer highest convenience for the airlines.

OUR PASSENGERS!

A service-oriented airport. Check-in times under 30 minutes, take-offs and landings on schedule, short ways for the passengers. Personal service instead of anonymous procedures. All the advantages for the airlines, passengers, attendants and tenants.

A safe international airport.

Runways: 1 concrete runway
(9056 ft, orientation 17/35)
2 grass runways

Precision instrument landing system of category III a/b

No restriction of the airline operations during the entire period of reconstruction!

No delays caused by the construction work! Check-in times of approx. 30 minutes will remain unchanged.

No diminution of the space available and no infrastructural cutbacks during the entire renovation period.

No dirt or dust problems (dustproof seclusion of the building sites).

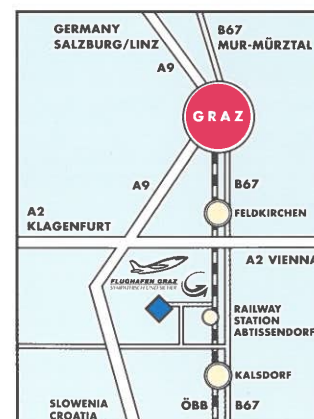
IMPORTANT ANNOUNCEMENTS

We do everything to keep the disturbances entailed by the construction works and the noise nuisances at the absolute minimum.

However, the possibility of minor disturbances cannot be excluded completely, and some detours may be unavoidable. We appreciate very much your understanding.

Our staff will be glad to help you in case of inquiries, suggestions, or complaints.

Please dial (0316) 29 15 41 - ext. 119 or 120 for additional informations.



Media licensee: Flughafen Graz Betriebsges.m.b.H., A-8073 Feldkirchen
Content responsibility: Mag. Doris Schröckor, Flughafen Graz Betriebsges.m.b.H.
Conception and layout: Advertising agency Spreitzer & Spreitzer, Graz-Vienna
Photographs: Graz airport, Prostrejnik, Schwingenschlag! Print: DA/Graukorn

RECONSTRUCTION OF PASSENGER TERMINAL



With its attractive network of over 100 weekly regular and charter connections Graz airport is truly the airport of the region, attracting more and more an ever increasing number of passengers. And it is being frequented by the most modern planes with a minimum of noise and environmental pollution.



MORE SERVICE FOR

A powerful air traffic junction in the centre of Styria. With about 50 residential undertakings and some 250 employees. Presently, 5 airlines and 60 charter operators provide regular services to the airport. About 10 charter air carriers and aviation associations offer services in

the field of pilot training. 10 ground freighters and 4 airlines providing air-freight services will handle any transport job.



FLUGHAFEN GRAZ
SYMPATHISCH UND SICHER



GRAZ AIRPORT - SAFE AND LIKEABLE



THE DEMAND

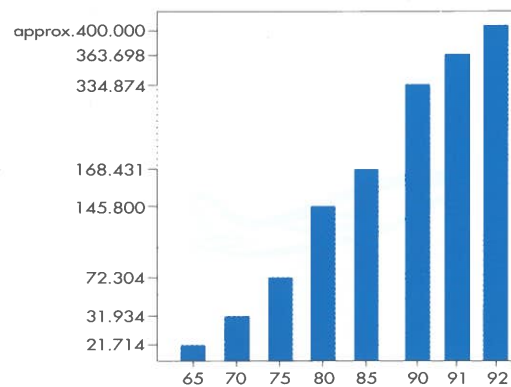
Founded in 1914, Graz airport is Austria's oldest airfield still at the site of its first establishment. The first departure building was in operation for some thirty years. Based on plans developed in the early sixties, the existing terminal was built between 1966 and 1968. In those times, some 30,000 to 40,000 passengers had to be handled per year. In the meanwhile, the annual passenger volume is roughly ten times that figure. Even with the best technical equipment and optimum channelling of the flow of traffic, this brings the existing facilities to their capacity limit. There are no more space reserves and in peak times, the airport is overstrained by the transport volume to be handled.

THE GOAL

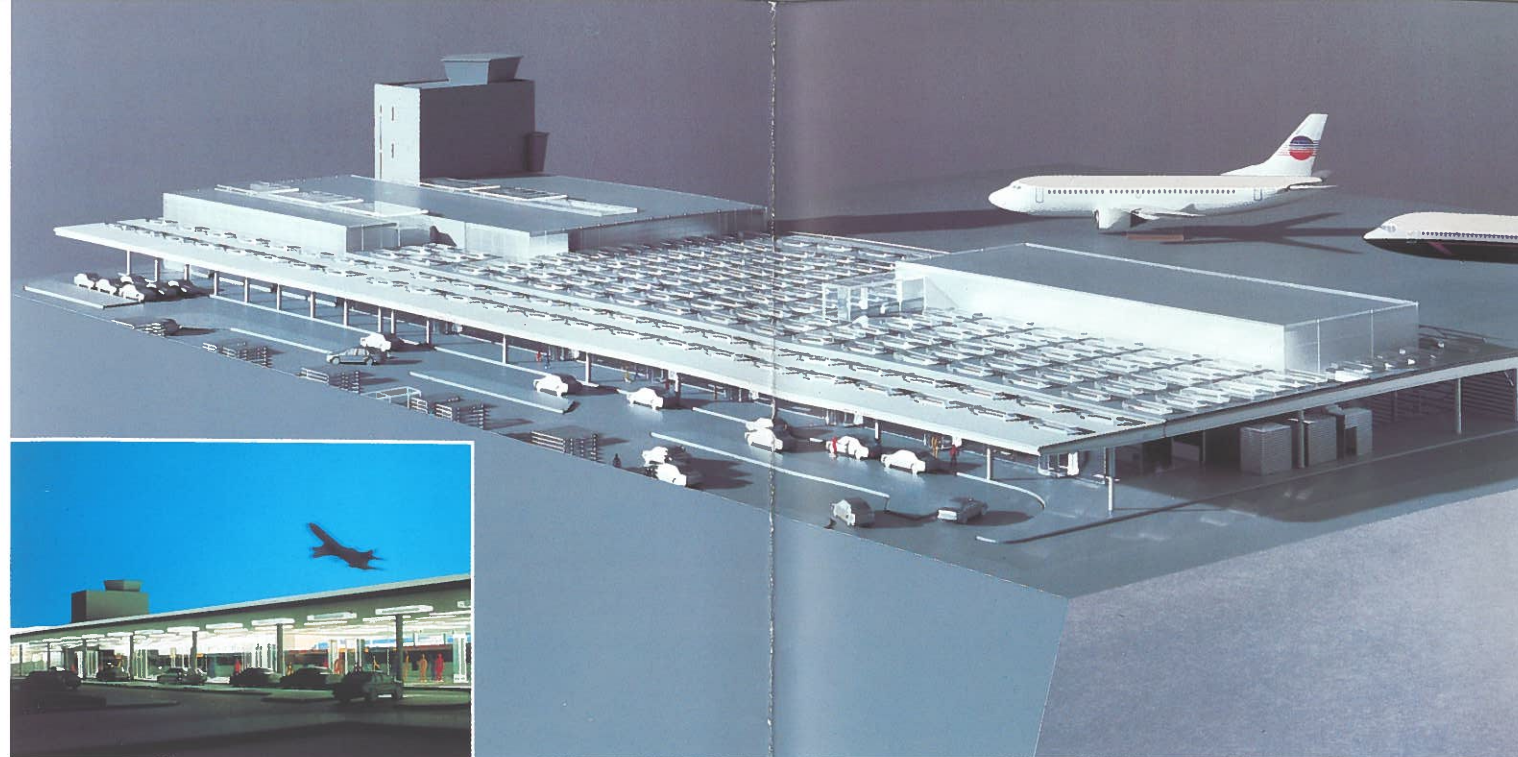
To become Europe's most modern regional airport.



Construction period: November 1992 to December 1994



TRANSPORT DEVELOPMENT (PASSENGERS PER YEAR)



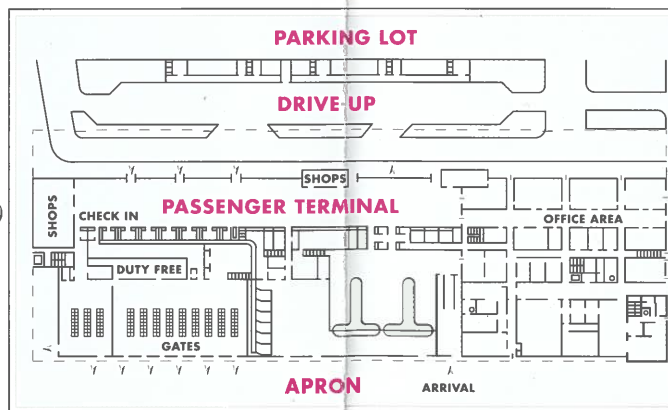
THE CONCEPT

You can see where's what and you don't have long ways - the strongpoints of a regional airport!

- Short check-in times
- Clear layout of the facilities
- Up to thirteen check-in counters
- Fourteen service counters
- Two-belt arriving baggage terminal

More service for our passengers!

- Roofed two-lane drive-up
- Shops for quick shopping
- Cafeteria in the waiting area
- Larger restaurant with winter garden (overlooking apron)
- VIP lounge for first class and business class passengers
- All facilities also suited for the handicapped
- Baby facilities in all bathrooms



More space for our passengers!

- Construction of a business centre for firms and agencies
- Extension of the passenger area towards the north (under restaurant) and east (in the direction of the parking lot)
- Built on area 115,650 sq. ft. in total (presently 73,700 sq. ft.)

Advancement of general aviation!

- Graz will have an adequate general aviation center for business travel
- Own duty free shop and VIP lounge

The airport as a centre of communication!

- VIP lounge with the most up-to-date conference infrastructure
- VIP reception service

Economic and clean operation!

- Connection to long-distance heating
- Waste separation system throughout

CONSTRUCTION PHASES

1

Setup of building site and construction start: November of 1992

Installation of the new departure area under the restaurant (check-in counters, shops, passport and safety control, gates, duty free shop, VIP lounge etc.)

Extension of the passenger area towards the north

Erection of the business centre south of the existing terminal

Setup of the access area building site - new drive-up

No changes in the existing passenger terminal

Transitional solution for the gate area in the form of a sophisticated container-based arrangement: no space losses, all facilities continue (coffee shop/bar, duty free shop, telephones, bathrooms)

Completion of the first construction phase: December of 1993

2

Start: January of 1994

Translocation of the airport operations to the new departure area

Putting into service of the business centre

Reconstruction of the existing terminal hall: service counters, shops, cafeteria, arrival area with passport control, two baggage belts, bank etc.

All passenger facilities in the new departure area

No space cuts will be engendered in relation to the existing terminal hall

Overall completion and putting into service: end of 1994 - beginning of 1995